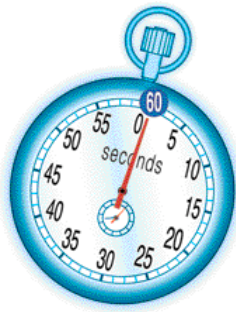


Perfect Timing. It's Our Business.



Testing Results

Certification: Leap Second Testing

Model Name: TimeSource

Current Release:

GPS 1.02.05

1.06.06 TS3000

1.06.07 TS3500

1.06.09 TS3100 & TS3600

Leap Second tested product from Symmetricom provides Time of Year information across the boundary between December 31, 2005, and January 1, 2006. This includes, but is not limited to, handling of the Time information provided via integrated displays and output ports.

Symmetricom products that report time information will do so as described below.

Expected Leap Second Behavior:

SNTP Ethernet Port

Based on our observations, customers whose TimeSource has been running prior to the leap indicator bulletin (sent July 4, 2005) will be one second ahead. However, if the TimeSource is re-initialized or re-started after the leap indication, the time will be accurate and it will leap correctly at the end of the year. For customers whose system has not been restarted, we believe after the leap occurs on Dec 31, the NTP will be correct.

TOD Port (Cisco and NTP type 4 formats)

For units being used as reference drivers utilizing the TOD port, a fudge factor can be set on the NTP server to compensate for any time deviation.

Resolution Plan: No action required. Symmetricom is continuing to test and monitor behavior. A PCN will be released announcing availability of application firmware 1.06.10 and 1.06.11 containing the correction as soon as it is available.

Symmetricom is not responsible for the correct processing of this information by any external program or device, only the transition from the year 2005 to the year 2006 as provided by integrated displays and output ports.

Symmetricom, Inc., is making every effort to provide accurate and up-to-date information on the Leap Second readiness of its products. This information reflects the current results of compliance tests of standard products and may be updated or changed without notice as testing continues. This information is published for your assistance only. An overall assessment and plan based on your particular needs is your responsibility. Symmetricom disclaims any implied warranties of merchantability and fitness for a particular purpose and makes no express warranties except as may be stated in its written agreement with its customers. In no event is Symmetricom liable to anyone for any indirect, special, or consequential damages. Liability is limited to the purchase price of the product.